

**New &
Improving**

*You're
the Artist*



Ideal Viscosity, Where You Want It



FineEtch[®] 10%, 35%, 37%, 38%

Semi-Gel Type Phosphoric Acid for Dentin and Enamel

Indication

- Pre-treatment agent which helps to bonding agent having a strong bonding strength between resin and teeth

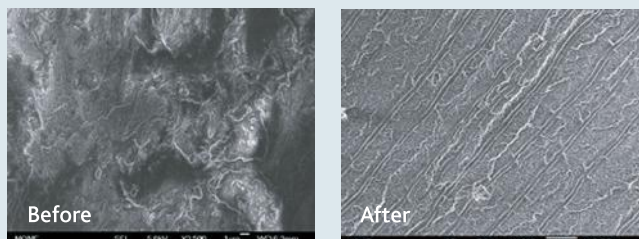
Advantages

- Contains bio-compatible polymeric materials
- Completely residue-free after water-spray
- Can be placed exactly wherever needed because of excellent viscosity
- Contains 10, 35, 37, 38% phosphoric acid
- Effectively removes smear layers and creates the ideal bonding surfaces on dentin, enamel, and dental posts.

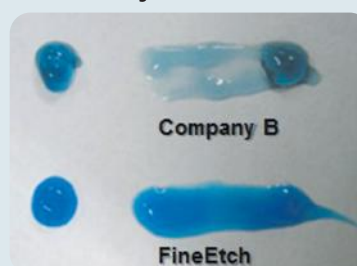
Contents

- 5mL x 3 Syringes, 8 Etchant tips
- 1.2mL x 4 Syringes, 12 Etchant tips

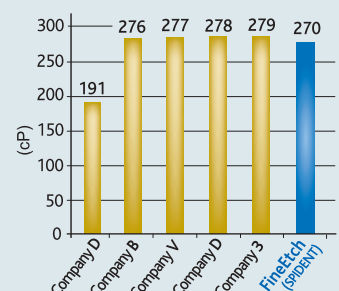
SEM Image



Flowability



Viscosity



SPIDENT CO., LTD.

203 & 312, Korea Industrial Complex, 722, Gojan-Dong, Namdong-Gu, Incheon, Korea 405-821

Tel. 82-32-821-0071 Fax. 82-2-318-0034 E-mail. synergy@spident.co.kr www.spident.co.kr

CE
0120